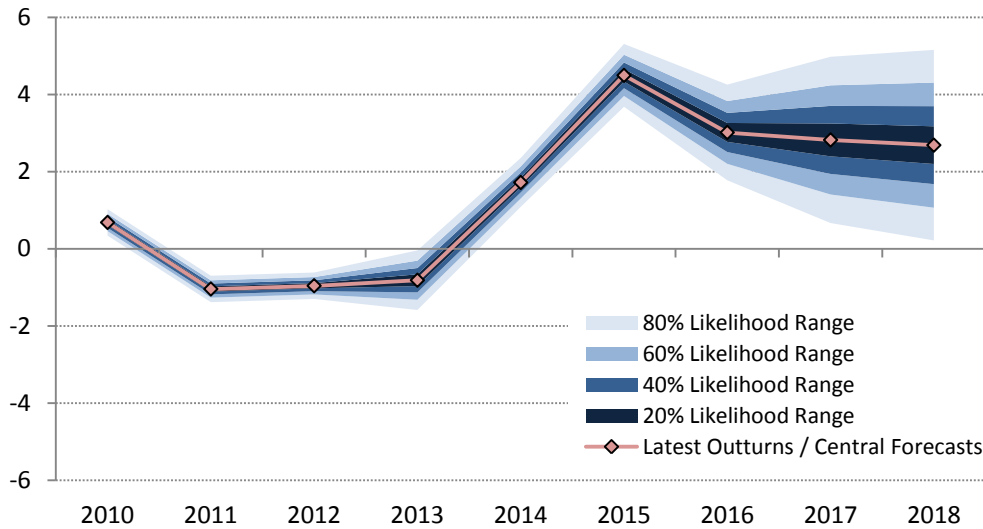


Appendix D: Fan Charts

Figure AD.1: Real Consumption Fan Chart

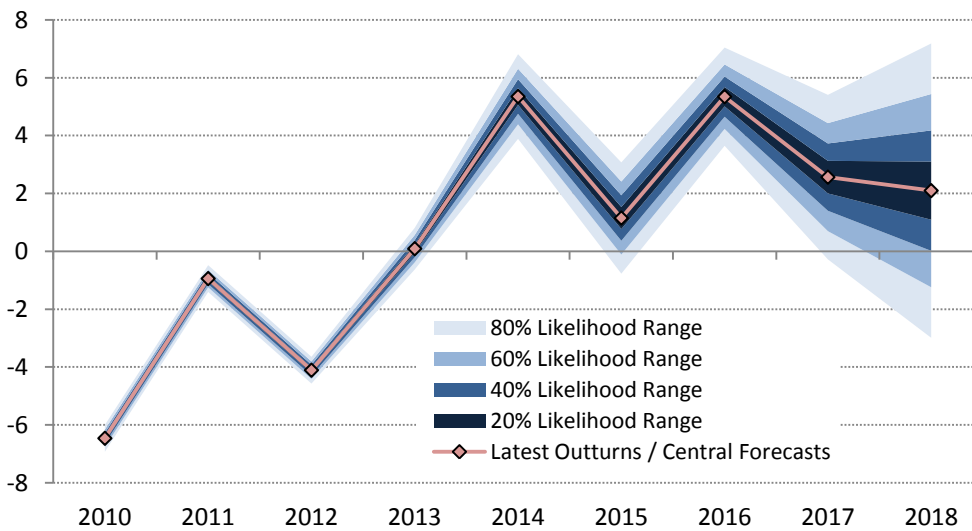
Percentage change (year-on-year)



Note: Distributions or 'fans' around historical growth estimates are based on previous revisions to real consumption data. Forecast errors based on 2000-07; 2010-15 sample.

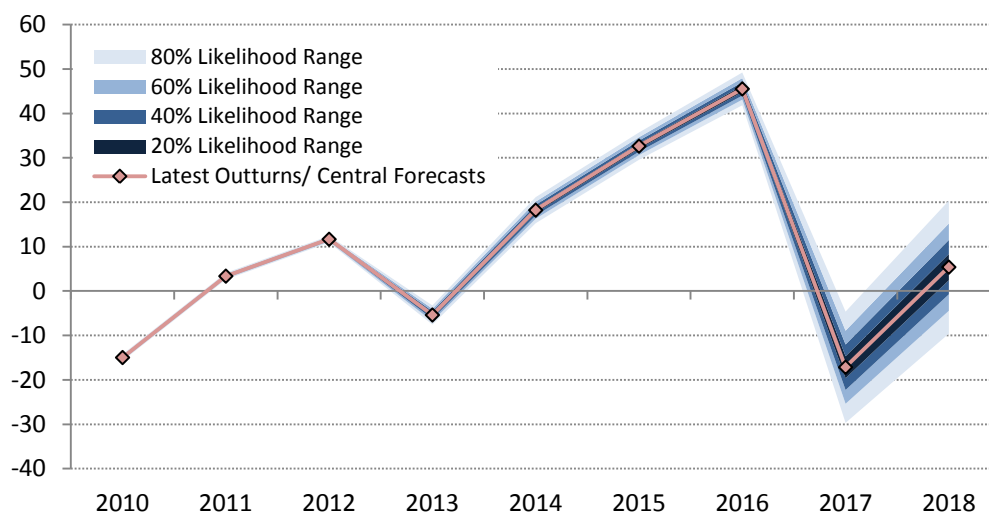
Figure AD.2: Real Government Consumption Fan Chart

Percentage change (year-on-year)



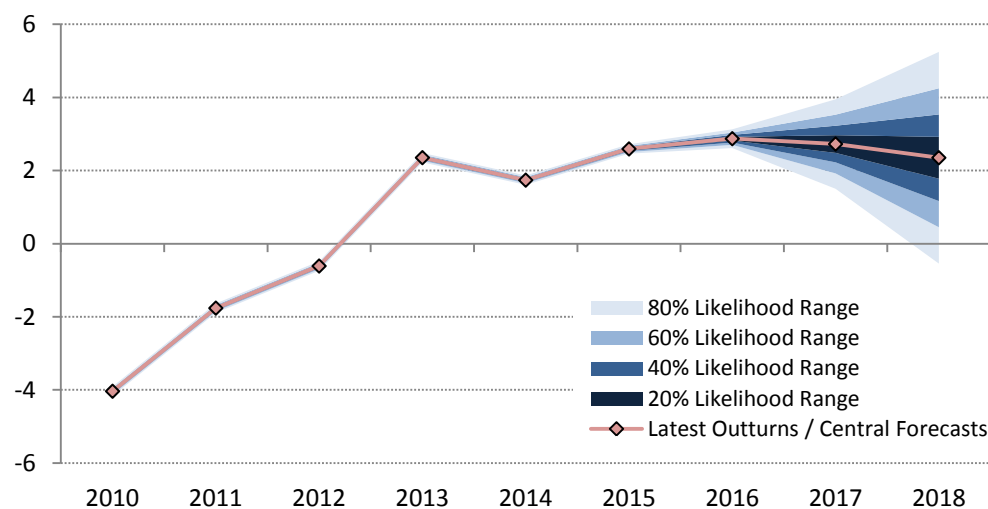
Note: Distributions or 'fans' around historical growth estimates are based on previous revisions to government consumption data. Forecast errors based on 2000-07; 2010-15 sample.

Figure AD.3: Real Investment Fan Chart
Percentage change (year-on-year)



Note: Distributions or 'fans' around historical growth estimates are based on previous revisions to real investment data. Forecast errors based on 2000-07; 2010-15 sample.

Figure AD.3: Employment Fan Chart
Percentage change (year-on-year)



Note: Distributions or 'fans' around historical growth estimates are based on previous revisions to employment data. Forecast errors based on 2000-07; 2010-15 sample.

Table AD.1: Forecast Errors (Root Mean Squared Errors)

	T	T+1	T+2
GDP	1.3	2.2	2.5
Consumption	1.2	1.6	2.1
Investment	9.3	11.4	11.8
Government	1.8	3.7	3.5
Employment	0.5	2.0	2.5

Sources: Department of Finance & internal IFAC calculations. Root mean squared errors are calculated based on forecast errors in the period 2000-07; 2010-2015, using forecasts in various *Budget* publications.